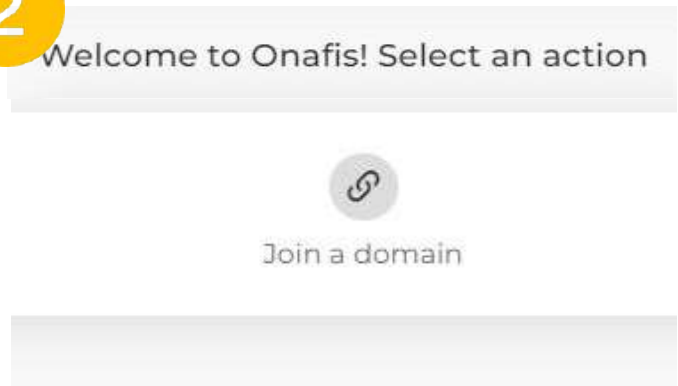


1



2



Domain access request

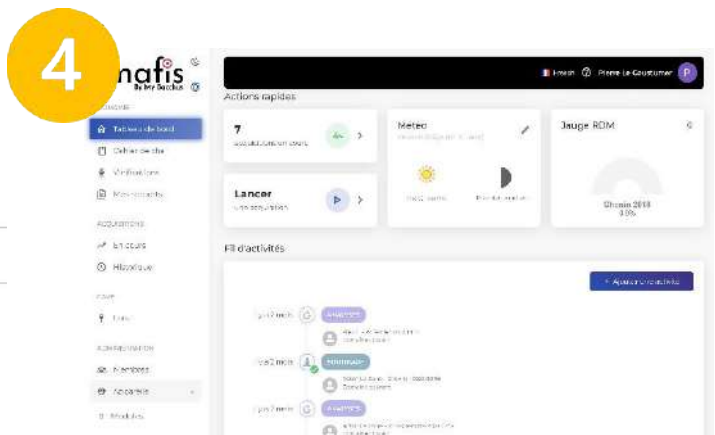
3

Please enter the domain token the owner gave you.

Domain token

adgza54qz6d-cqcg1q587-cqsync5d8q7z

4



1 Create an Onafis account or log in using a Google account.
This account is independent of your domain, it simply allows access to the application.

2 Click on "Join a domain" to access your domain data.

3 You are the owner :
Once your Onafis account is created and your request is sent, our teams will send you the access key to your domain.

You will be able to retrieve this key in the
Administration > Members > Copy domain ID.

You can then send it to your colleagues so that they too can access the domain data.

You're not the owner :
Enter the key that your cellar master has at his disposal.

4 Welcome to your dashboard! You now have access to all the data of the domain.



Cellar

Create batches to associate with your scenarios.



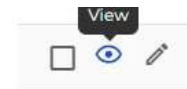
Scenarios and data

You can Track and Launch measurement acquisitions.

In the section SCENARIO > Running : set up and launch a new scenario. You can also create and access scenario from your dashboard.

Choose the probe, the sensors you want to measure and the associated batches. Several scenarios can be performed at the same time.

Access the list of your scenarios and view each of them using the button



In the DOMAIN > Wine-makings section, create vinifications in order to visualize the fermentation curves.



Cellar booki

Add, Comment, Follow the evolution of your activities by keeping your cellar book in this section.



My reports

Here you will receive your reports on a regular basis (monthly or bi-monthly). You can download them in pdf format.

For more information, please contact us:

contact@onafis.com

02 52 88 00 07